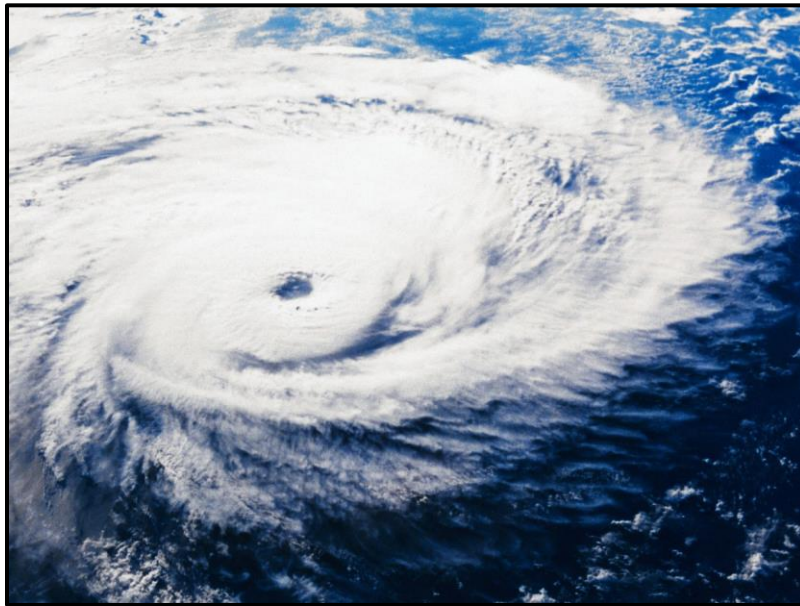




Turnberry On The Green Condo Association

HURRICANE SEASON
August 1 - November 30

PREPAREDNESS
PACKET



2019



Turnberry On The Green Condo Association

HURRICANE PREVENTIVE MEASURES

August 27, 2019

Dear Turnberry on the Green Residents,

As we are at the middle of the hurricane season and it will last through November 30th, the coast of South Florida can be threatened at anytime during this season. The information contained in this report will help you prepare for a hurricane emergency and understand how the Association will also prepare your building. This report has also been written to help you take precautions to protect your family and property. Please take a moment to read this very important information. Your Association would like to ensure that all unit owners receive as much information as possible to aid in the preparation for an upcoming storm. During these months special precautions need to be taken by everyone in the community.

The following links will aid you in those preparations.

**<http://www.nhc.noaa.gov>
<http://www.fema.gov>
<http://www.floridadisaster.org/>
<http://www.miamidade.gov/hurricane/>**

South Florida television station websites also include hurricane preparedness links. Your local supermarket will also have guides to hurricane safety.

Please be advised that at the time of a Hurricane Watch, management and its personnel will begin to secure the building and its common areas. All personnel – Management, maintenance, janitorial, engineering and front desk personnel will remain at the property maintaining the building services and assisting residents as they evacuate. When sustained winds reach 45 MPH and the hurricane remains an imminent threat, the essential personnel will shut down the property's equipment such as the elevators, HVAC equipment, domestic water pumps, pool / spa equipment, place all gate and arms in the up position and make sure that the Association's ornamental landscaping has been secured and/or removed. This will help assure your systems will be operational after weather conditions return to

normal and power has been restored. After the shut-down has been completed our essential personnel will evacuate, as do all governmental essential services.

PLAN AHEAD

Implement as many precautions as practical in advance, such as removing all furniture from the balconies and patios, removing and securing all outside items that might become missiles during the storm and placing towels on window sills and on the bottom of all sliding glass doors.

Please make arrangements in advance as to where you will stay during an evacuation. **Remember that not all evacuation centers allow pets.** Contact your assigned evacuation center in advance so you can make plans for you and your pets. There are currently two centers that accept families with their pets during emergencies:

E. Darwin Fuchs Pavilion
10901 SW 24th St.
Miami, FL 33165

Dr. Michael M. Krop Senior High
1410 County Line Road
Miami, FL 33179

Note: Not all pet-friendly evacuation centers are open for every storm.

Leaving town for any length of time during hurricane season?

BEFORE YOU GO:

Remove all patio furniture, plants and loose objects from your balcony. In the event of a storm, do not rely on the association's staff to make preparations for you; their time will be dedicated to securing the community's mechanical operations and common areas.

EVACUATION

Most important: When an evacuation order is issued, **EVERYONE** must evacuate the community and go to your community's assigned shelter. An evacuation area is no place to be during a hurricane. Employees and residents are **ALL** expected to evacuate. There will be no emergency services during a storm, and authorities will not be available to help you.

At the time a call for evacuation has been issued, the Association employees will conclude the procedures to prepare the community's common areas for the storm and leave. Once an evacuation order is given, you should be packed and prepared to leave.

Your city officials advise the elderly or handicapped residents not to wait for the official evacuation order... Please leave early.

Turnberry on the Green Condominium is located in a mandatory evacuation zone due to its close proximity to the ocean. **In the event that the local authorities call for the evacuation of the building, all residents are urged to do so.**

A high rise building such as Turnberry on the Green is subject to special concerns during a hurricane:

- There is a dramatic increase in wind speed the higher you go above ground level in a high-rise. The wind speed on the 3rd floor may be 110 mph, while on the 12th floor it can be 130 mph.
- During a hurricane, electric power may be lost which means there will be no elevators, no water and no light (except for emergency lights in the corridors).
- Should there be a storm surge; the ground level could be flooded hindering any possibility of access in or out of the building.
- Should there be a fire or other emergency situation; emergency crews will not be able to respond during or immediately after the storm. You risk being trapped with little or no assistance.

To find the Storm Surge Planning Zone & Evacuation Centers near you (See the last page):

1. Visit: <http://gisweb.miamidade.gov/communityservices/>
2. Call 311

HURRICANE GUIDE

Hurricanes are strong and dangerous storms that should be taken very seriously. They are a great threat to life and property.

The Hurricane Season in South Florida begins June 1st and ends November 30th.

Hurricanes are categorized according to their wind speed:

- Category One - Winds of 70 mph to 95 mph.
- Category Two - Winds of 96 mph to 110 mph.
- Category Three - Winds of 110 mph to 130 mph.
- Category Four - Winds of 135 mph to 155 mph.
- Category Five - Winds of 155 mph or greater.

The higher the category of a Hurricane, the more damage will result:

CATEGORY ONE:

STORM SURGE 4-5 FEET ABOVE NORMAL:

No real damage to building structures. Damage primarily to unanchored mobile homes, shrubbery and trees. Also, some coastal road flooding and minor pier damage.

CATEGORY TWO:

STORM SURGE 6-8 FEET ABOVE NORMAL:

Some roof damage. Door and window damage to buildings. Considerable damage to vegetation, mobile homes and piers. Coastal and low-lying escape routes flood 2-4 hours before arrival of center. Small craft in unprotected anchorage will break moorings.

CATEGORY THREE:

STORM SURGE 9-12 FEET ABOVE NORMAL:

Some structural damage to small residences and utility buildings with a minor amount of curtain wall failures. Mobile homes are destroyed. Flooding near the coast damages smaller structures with large structures damaged by floating debris. Terrain lower than 5 feet above sea level may be flooded inland as far as 6 miles.

CATEGORY FOUR:

STORM SURGE 13-18 FEET ABOVE NORMAL:

More extensive curtain wall (outside wall) failures with some complete roof structure failures on small residences. Major erosion in beach areas. Major damage to lower floors of structures near the shore. Terrain continuously lower than 10 feet above sea level may be flooded requiring massive evacuation of residential area inland as far as 6 miles.

CATEGORY FIVE:

STORM SURGE GREATER THAN 18 FEET ABOVE NORMAL: Complete roof failure on many residences and industrial buildings. Some complete building failures with small utility buildings blown over or away. Major damage to lower floors of all structures located less than 15 feet above sea level and within 50 yards of the shoreline. Massive evacuation of residential areas on low ground within 5-10 miles of the shoreline may be required.

Before a storm strikes there are two official types of warnings:

1. A “hurricane watch” means a hurricane **may** strike an area within 24-48 hours.
2. A “hurricane warning” means a hurricane is **expected** to strike in 24 hours or less.

HOW TO PREPARE
BEFORE THE FIRST HURRICANE OF THE SEASON

You should have on hand:

- ✓ At least a seven day supply of bottled water (seven bottles per person) and canned food that can be stored without refrigeration (be sure to have a manual can opener on hand).
- ✓ At least two 6 volt flashlights on hand. (Do not use candles. This may cause a fire and emergency crews may not be able to provide assistance). Have extra batteries available.
- ✓ A fully stocked first aid kit.
- ✓ An adequate supply of any prescription medicines you may need.
- ✓ A fire extinguisher.
- ✓ A battery powered portable radio and extra batteries.
- ✓ A supply of masking or duct tape.
- ✓ In the event you are going to be out of town during the season, make arrangements with a friend, relative or neighbor to remove all items from your balcony, secure your hurricane shutters and to move your vehicle/s.
- ✓ Insurance coverage - Review your policy to make sure coverage is adequate (seek advice from your insurance agent). You should consider taking pictures or videotaping your apartment to include decor items, jewelry, collectibles, etc. If you do not have insurance, obtain coverage now before it’s too late! Once a hurricane approaches, insurance companies will not offer or bind coverage.

HURRICANE PRECAUTIONS

- | |
|--|
| <ol style="list-style-type: none">1. Remove all items from your balconies. Flying debris can kill or severely injure you or your neighbor. |
|--|

This is extremely important

2. Fill your tub(s) with water for personal hygiene and flushing your toilet. We may be without water for several days. Fill sterile containers with fresh water-for drinking. **(At least 1 gallon per day, per adult, is recommended)**. Stock up on non-perishable food items. **(You should have at least a 7-day supply)**.
3. Move all items away from windows. During a hurricane, high velocity winds will cause your windows to bow inward, allowing water into your apartment. We advise having a supply of towels on hand to place in your window tracks to limit seepage.

4. Stay clear of all windows during the storm. Flying glass and other projectiles can kill or severely injure you. We advise you to follow the authorities' directions and evacuate the area once the order has been issued.
5. We **will** lose power during a hurricane. We might also lose back-up power from our emergency generator. In any case, no apartments are connected to the emergency generator. **The elevators will operate on the generator's power, if the generator is disabled, there will be no elevator or lighting in the building!**
6. If Miami-Dade County orders an evacuation for this area, Security will make an announcement notifying all residents. At this time the Aventura Police will also inform all residents of the County order and advise anybody who that remains there will be no emergency response services immediately before, during or after the hurricane. **This means no ambulance, fire or police responses at all!**
7. All residents with special needs are asked to make any arrangements in advance for their care and transportation in the event there is an evacuation order given.

Remember, if the building power goes off there will not be any reliable elevator operation and there might not be any employees available to assist you if there is a problem. Once again, emergency services will respond slowly or may not respond at all!

8. There will be employees on duty before and after the hurricane, however the staff is responsible to secure common areas and might not be available to assist individual residents. If an employee can assist you they will. **Please be patient!**
9. If you choose to stay in the building through the hurricane, **WHICH IS NOT ADVISABLE**, please notify the management office or security so they have a list of residents to be checked on after the hurricane has passed.
10. During a hurricane, telephone service will be out for an indefinite time and cellular service will probably be disrupted (**do not count**) on being able to call Security, Management, Maintenance or Public Services to respond to your needs.

BE PREPARED!

- Stock up on batteries, drinking water and canned goods.
- Freeze water in plastic jugs and use them to fill empty spaces in your freezer and refrigerator to help keep food cool.
- Have extra flashlights available. Do not store the batteries inside the flashlight. Keep a flashlight in every room of the house.
- Keep a battery-powered radio and/or TV with plenty of batteries for both.
- Before the storm arrives turn your freezer and refrigerator to the coldest setting.

- ✓ Open the refrigerator only when absolutely necessary. This will allow food to keep cool for up to two days.
- ✓ Fill your bathtub(s) with water to be used for bathing and sanitary purposes. Seal the bathtub drain with caulking to prevent water from leaking out. This water is not for drinking; your tub is not sterile.
- ✓ Plan ahead, have an extra supply of any necessary medication(s) you need.
- ✓ Have a manually operated can opener to open your canned goods. Remember there will be no power in your apartment for an extended period of time.
- ✓ Fill your vehicle gas tanks to full.
- ✓ Remember that cooking on your balcony is a fire hazard and is prohibited by law. Barbecue grills are not allowed to be used on your balcony.
- ✓ Keep a portable cooler and fill it with ice prior to the storm.
- ✓ Pick up some books or games. A slow moving storm may not pass for a considerate amount of time.
- ✓ Make preparations for housing your pet. Kennels and Veterinarians facilities fill up quick as a storm approaches.
- ✓ Stay tuned to local radio and TV stations for hourly updates.

For your safety, it is not advised you stay in the building if the County orders an evacuation.

ONCE AGAIN, NORMAL AND EMERGENCY SERVICES WILL NOT BE AVAILABLE IMMEDIATELY BEFORE, DURING OR AFTER THE HURRICANE!

AFTER THE HURRICANE

All essential personnel will return to the property as soon as physically possible after sustained winds have dropped below 45 MPH and an all clear has been issued.

If you have any questions, please contact the management office at: (305)-466-7767.

IMPORTANT EMERGENCY TELEPHONE NUMBERS

Emergencies

911

Miami-Dade County

311 or 305-468-5900

TTY/TDD call Florida Relay 711

Toll Free outside Miami-Dade County

1-888-311-DADE (3233)

Important service updates are posted during Emergency Operations

Center activation at: www.miamidade.gov

Miami-Dade County Office of Emergency Management

www.miamidade.gov/oem

National Hurricane Center

305-229-4523

www.nhc.noaa.gov

Toll-Free Hurricane Hotline /Answer Center

305-468-5900

1-877-419-2274

(Latest Storm Advisories at any time.)

Miami-Dade County Emergency Evacuation Assistance Program

305-468-5900

305-468-5402 TDD

National Weather Service

305-229-4522

305-229-4528

Special Needs

305-513-7700

American Red Cross

305-644-1200

Humane Society

305-696-0800



American Red Cross



2019 EVACUATION CENTERS

Evacuating locally to the home of a friend or family member outside of the evacuation area is highly recommended. Hurricane Evacuation Centers should be utilized when that alternative does not exist. Remember, evacuation centers are not designed for comfort and not all accept pets.

NOT EVERY SITE WILL OPEN FOR EVERY EVACUATION!

Please monitor the local radio or television, or dial 3-1-1 (TDD (305) 468-5402) to find out which centers are open when an evacuation order is announced. People who require special assistance in evacuating can dial 3-1-1 to get information about specialized evacuation centers.

The schools listed below are accessible for people with disabilities. 

Facility Name	Address	City/Neighborhood	Zip Code
Northeast Miami-Dade County			
Dr. Michael M. Krop Senior	1410 NE 215 th Street	North Miami-Dade	33179
Highland Oaks Middle	2375 NE 203 rd Street	North Miami-Dade	33180
North Miami Beach Senior	1247 NE 167 th Street	North Miami Beach	33162
North Miami Senior	13110 NE 8 th Avenue	North Miami	33161
Miami Central Senior	1781 NW 95 th Street	Miami	33147
Northwest Miami-Dade County			
Miami Carol City Senior	3301 Miami Gardens Drive	Miami Gardens	33056
Lawton Chiles Middle	8190 NW 197 th Street	Northwest Miami-Dade	33015
Country Club Middle	18305 NW 75 th Place	Northwest Miami-Dade	33015
Barbara Goleman Senior	14100 NW 89 th Avenue	Miami Lakes	33018
Hialeah Gardens Senior	11700 Hialeah Gardens Blvd.	Hialeah Gardens	33018
Central Miami-Dade County			
Booker T. Washington Senior	1200 NW 6 th Avenue	City of Miami	33136
Charles Drew Middle	1801 NW 60 th Street	City of Miami	33142
Ronald Reagan Senior	8600 NW 107 th Avenue	Doral	33178
Miami Coral Park Senior	8865 SW 16 th Street	Westchester	33165
W.R. Thomas Middle	13001 SW 26 th Street	West Miami-Dade	33175
Southern Miami-Dade County			
South Miami Senior	6856 SW 53 rd Street	South Miami	33155
Terra Environmental Senior	11005 SW 84 th Street	Miami	33173
Felix Varela Senior	15255 SW 96 th Street	West Kendall	33196
Robert Morgan Senior	18180 SW 122 nd Avenue	Miami	33177
South Dade Senior	28401 SW 167 th Avenue	Homestead	33030



American Red Cross



CENTROS DE EVACUACIÓN 2019

La evacuación local hacia el hogar de un amigo o miembro de la familia que resida fuera del área de evacuación es la opción más recomendada. Los centros de evacuación en caso de huracán deben ser utilizados sólo cuando esa alternativa no sea posible. Recuerde que los centros de evacuación no están diseñados para brindar confort y no todos aceptan mascotas.

¡TODOS LOS SITIOS NO ABREN SUS PUERTAS EN TODAS LAS EVACUACIONES!

Por favor escuche de manera constante la radio local o la televisión o sírvase llamar al 3-1-1 (TDD (305) 468-5402) para averiguar cuáles centros abrirán sus puertas cuando se anuncie una orden de evacuación. Las personas que necesiten asistencia especializada para la evacuación pueden llamar al 3-1-1 para obtener información sobre centros de evacuación especializados.

Las escuelas que aparecen en la lista a continuación son accesibles para personas con discapacidades. 

Nombre de la instalación	Dirección	Ciudad	Código Postal
Noreste del Condado de Miami-Dade			
Dr. Michael M. Krop Senior	1410 NE 215 th Street	North Miami-Dade	33179
Highland Oaks Middle	2375 NE 203 rd Street	North Miami-Dade	33180
North Miami Beach Senior	1247 NE 167 th Street	North Miami Beach	33162
North Miami Senior	13110 NE 8 th Avenue	North Miami	33161
Miami Central Senior	1781 NW 95 th Street	Miami	33147
Noroeste del Condado de Miami-Dade			
Miami Carol City Senior	3301 Miami Gardens Drive	Miami Gardens	33056
Lawton Chiles Middle	8190 NW 197 th Street	Northwest Miami-Dade	33015
Country Club Middle	18305 NW 75 th Place	Northwest Miami-Dade	33015
Barbara Goleman Senior	14100 NW 89 th Avenue	Miami Lakes	33018
Hialeah Gardens Senior	11700 Hialeah Gardens Blvd.	Hialeah Gardens	33018
Zona central del Condado de Miami-Dade			
Booker T. Washington Senior	1200 NW 6 th Avenue	City of Miami	33136
Charles Drew Middle	1801 NW 60 th Street	City of Miami	33142
Ronald Reagan Senior	8600 NW 107 th Avenue	Doral	33178
Miami Coral Park Senior	8865 SW 16 th Street	Westchester	33165
W.R. Thomas Middle	13001 SW 26 th Street	West Miami-Dade	33175
Zona del sur del Condado de Miami-Dade			
South Miami Senior	6856 SW 53 rd Street	South Miami	33155
Terra Environmental Senior	11005 SW 84 th Street	Miami	33173
Felix Varela Senior	15255 SW 96 th Street	West Kendall	33196
Robert Morgan Senior	18180 SW 122 nd Avenue	Miami	33177
South Dade Senior	28401 SW 167 th Avenue	Homestead	33030

2019 HURRICANE SEASON – EMERGENCY EVACUATION PICK-UP SITES

Miami-Dade County encourages individuals living in storm surge planning zones and mobile homes to have arrangements in place to stay outside of the areas called for evacuations during a tropical storm or hurricane. These arrangements should be in place prior to the start of hurricane season (June 1st).

For those unable to make such arrangements, the American Red Cross opens Evacuation Centers as shelters of last resort. Individuals that are unable to provide their own transportation to an Evacuation Center can use public evacuation transportation.

Miami-Dade Transit will activate specific Emergency Evacuation Bus Pick-Up Sites by zone (pages 2-4) as directed by the Miami-Dade County Office of Emergency Management. In addition to the zones, mobile home parks are vulnerable to high winds and have designated Evacuation Bus Pick-Up Sites (pages 5-6). If a designated Emergency Evacuation Bus Pick-Up site is not located near you, regular Miami-Dade Transit bus service will continue and residents can utilize regular routes to get to an evacuation bus pick-up site. Evacuees should advise the bus operator of their intention to go to an emergency evacuation pick-up site. Residents can use the trip planner at: <http://www.miamidade.gov/transit/metrobus.asp>.

Emergency Evacuation Bus Pick-Up Sites are identified by a sign that reads “**EMERGENCY EVACUATION BUS PICK-UP SITE**.” The buses placed into service for the evacuation will have displays that read “**EMERGENCY EVACUATION**” and these buses will only travel between Emergency Evacuation Bus Pick-Up Sites and Evacuation Centers. Please note that the evacuation areas will be determined individually for each storm.

To learn which Emergency Evacuation Bus Pick-Up Sites are active during a particular storm you should listen to the local media, monitor the County’s website at <http://miamidade.gov/>, or contact Miami-Dade 311 Contact Center.





2019 HURRICANE SEASON – EMERGENCY EVACUATION PICK-UP SITES

ZONE A PICK-UP SITES

(sorted by City)

ZONE A - EVACUATION BUS PICK-UP SITE	ADDRESS	CITY	ZIP
EAST RIDGE RETIREMENT VILLAGE	SW 193 TERR & SW 87 AVE	CUTLER BAY	33157
THE COVE CONDIMINIUM COMMUNITY	21163 SW 85 AVE	CUTLER BAY	33189
VILLAGE OF KEY BISCAVNE FIRE STATION	CRANDON BD & E ENID DR	KEY BISCAVNE	33149
DORSET HOUSE	2500 NE 135 ST	NORTH MIAMI	33181
STRATFORD CONDOMINIUMS	NE 163 ST & NE 28 AVE	NORTH MIAMI BEACH	33160
EASTERN SHORE SHOPPING CENTER	NE 163 ST & NE 35 AVE	NORTH MIAMI BEACH	33160
TARGET SHOPPING CENTER	NE 140 ST & BISCAVNE BLVD	NORTH MIAMI BEACH	33181
WESTMINSTER CHRISTIAN SCHOOL	6855 SW 152 ST	PALMETTO BAY	33157

ZONE B PICK-UP SITES

ZONE B - EVACUATION BUS PICK-UP SITE	ADDRESS	CITY	ZIP
CORPORATE CENTER OF AVENTURA	NE 209 ST & BISCAVNE BLVD	AVENTURA	33180
BAL HARBOUR VILLAGE HALL	655 96 ST	BAL HARBOR VILLAGE	33154
HARBOR HOUSE CONDOS	10285 COLLINS AVE	BAL HARBOR VILLAGE	33154
BAY HARBOR TOWN HALL	9665 BAY HARBOR TERR	BAY HARBOR ISLANDS	33154
CUTLER RIDGE PARK	10100 SW 200 ST	CUTLER BAY	33157
FRANJO PARK	20175 FRANJO RD	CUTLER BAY	33189
SOUTHLAND MALL (SOUTHSIDE)	10850 SW 211 ST	CUTLER BAY	33189
FLORIDA CITY - CITY HALL	404 W PALM DR	FLORIDA CITY	33034
SOUTH DADE CAMP	13600 SW 312 ST	HOMESTEAD	33033
STANLEY AXLRD UTD TOWERS	1809 BRICKELL AVE	MIAMI	33129
REBECCA TOWERS SOUTH	150 ALTON RD	MIAMI BEACH	33139
COUNCIL TOWERS SOUTH	533 COLLINS AVE	MIAMI BEACH	33139
SOUTH BAY CLUB	800 WEST AVE	MIAMI BEACH	33139
SOUTH SHORE COMMUNITY CENTER	833 6 ST	MIAMI BEACH	33139
STREET LOCATION	920 ALTON RD	MIAMI BEACH	33139
OCEAN FRONT AUDITORIUM	1001 OCEAN DR	MIAMI BEACH	33139
CVS PHARMACY (EAST SIDE)	14 ST & ALTON RD	MIAMI BEACH	33139
IDA FISHER COMMUNITY SCHOOL	1424 DREXEL AVE	MIAMI BEACH	33139
EUCLID GARDENS CONDOMINIUM	1575 EUCLID AVE	MIAMI BEACH	33139
MIAMI BEACH CITY HALL	1700 CONVENTION CENTER DR	MIAMI BEACH	33139



2019 HURRICANE SEASON – EMERGENCY EVACUATION PICK-UP SITES

ZONE B PICK-UP SITES Continued

ZONE B - EVACUATION BUS PICK-UP SITE	ADDRESS	CITY	ZIP
ALTON POINTE	1965 ALTON RD	MIAMI BEACH	33139
MIAMI BEACH GOLF CLUB	2301 ALTON RD	MIAMI BEACH	33140
SCOTT RAKOW YOUTH CENTER	2700 SHERIDAN AVE	MIAMI BEACH	33140
EDITION HOTEL (EAST SIDE)	29 ST & COLLINS AVE	MIAMI BEACH	33140
CROWN HOTEL	4041 COLLINS AVE	MIAMI BEACH	33140
TEMPLE BETH SHALOM	4144 CHASE AVE	MIAMI BEACH	33140
SHERRY FRONTENAC HOTEL	6565 COLLINS AVE	MIAMI BEACH	33141
STREET INTERSECTION	NORMANDY DR & RUE VERSAILLES	MIAMI BEACH	33141
NORMANDY POOL	71 ST & TROUVILLE ESPLANADE (Normandy Dr.)	MIAMI BEACH	33141
NORTH SHORE PARK	72 ST & BYRON AVE	MIAMI BEACH	33141
NORTH SHORE LIBRARY	75 ST & COLLINS AVE	MIAMI BEACH	33141
BISCAYNE ELEMENTARY	800 77 ST	MIAMI BEACH	33141
STREET INTERSECTION	79 ST & HAWTHORNE AVE	MIAMI BEACH	33141
STREET INTERSECTION	81 ST & COLLINS AVE	MIAMI BEACH	33141
ST. JOSEPH'S SCHOOL	8625 BYRON AVE	MIAMI BEACH	33141
KLA SCHOOL	7800 HISPANIOLA AVE	NORTH BAY VILLAGE	33141
ARLEN HOUSE CONDOMINIUMS	BAYVIEW DR. & COLLINS AVE	SUNNY ISLES BEACH	33160
WINSTON TOWERS BLDG 300	230 174 ST	SUNNY ISLES BEACH	33160
WINSTON TOWERS BLDG 100	250 174 ST	SUNNY ISLES BEACH	33160
STREET INTERSECTION	189 ST & COLLINS AVE	SUNNY ISLES BEACH	33160
OCEAN VIEW	193 ST & COLLINS AVE	SUNNY ISLES BEACH	33160
SURFSIDE TOWN CITY HALL	9293 HARDING AVE	SURFSIDE	33154
HUD - PINE ISLAND	SW 272 ST & SW 127 AVE	UNINCORPORATED	33032



2019 HURRICANE SEASON – EMERGENCY EVACUATION PICK-UP SITES

ZONE C PICK-UP SITES

ZONE C - EVACUATION BUS PICK-UP SITE	ADDRESS	CITY	ZIP
OFFICE DEPOT SHOPPING CENTER	NE 179 ST & BISCAYNE BLVD	AVENTURA	33160
LAURA SAUNDERS ELEMENTARY	505 SW 8 ST	HOMESTEAD	33030
HARRIS FIELD	1034 NE 8 ST	HOMESTEAD	33030
STREET INTERSECTION	9050 BISCAYNE BLVD	MIAMI SHORES	33138
BAY VIEW TOWERS	2100 SANS SOUCI BLVD	NORTH MIAMI	33181
CHRIST FELLOWSHIP CHURCH	8900 SW 168 ST	PALMETTO BAY	33157
MAYS MIDDLE SCHOOL	11700 SW 216 ST	UNINCORPORATED	33170
LARRY/PENNY THOMPSON	12451 SW 184 ST	UNINCORPORATED	33177
DADELAND NORTH METRORAIL STATION	8300 SOUTH DIXIE HIGHWAY	UNINCORPORATED	33143

ZONE D PICK-UP SITES

ZONE D - EVACUATION BUS PICK-UP SITE	ADDRESS	CITY	ZIP
POLICE ATHLETIC LEAGUE GYM	600 SW 14 AVE	HOMESTEAD	33030
WILLIAM B. DICKINSON COMMUNITY CENTER	1601 N. KROME AVE	HOMESTEAD	33030
WEST PERRINE COMMUNITY ACTION AGENCY	17801 HOMESTEAD AVE	UNINCORPORATED	33157
8-1/2 SQUARE MILE	SW 168 ST & SW 197 AVE	UNINCORPORATED	33187
WEST KENDALL TRANSIT TERMINAL	9155 SW 162 AVE	UNINCORPORATED	33196
MIAMI DADE COLLEGE - KENDALL CAMPUS	11011 SW 104 ST	UNINCORPORATED	33176
CORAL REEF PARK AND RIDE LOT	SW 152 ST & 117 AVE	UNINCORPORATED	33177
STREET LOCATION	950 SW 68 AVE	UNINCORPORATED	33144
STREET LOCATION	NE 120 ST & NE 16 AVE	UNINCORPORATED	33161
STREET LOCATION	19800 W DIXIE HWY	UNINCORPORATED	33180

ZONE E PICK-UP SITES

ZONE E - EVACUATION BUS PICK-UP SITE	ADDRESS	CITY	ZIP
8-1/2 SQUARE MILE	SW 136 ST & SW 202 AVE	UNINCORPORATED	33196



2019 HURRICANE SEASON – EMERGENCY EVACUATION PICK-UP SITES

HURRICANE EVACUATION – MOBILE HOME PARKS (Part 1 of 2)

MOBILE HOME - EVACUATION BUS PICK-UP SITE (SORTED BY ZIPCODE)	ADDRESS	CITY	ZIP
PALM LAKE & WYNKEN BLYNKEN & NOD	W 28 ST & W 14 AVE	HIALEAH	33010
PALMETTO TRAILER ESTATES	3205 W 16 AVE	HIALEAH	33012
HIBISCUS & SUNNY GARDENS TRAILER PARKS	3000 W 16 AVE	HIALEAH	33012
HOLIDAY ACRES MOBILE HOME PARK	1401 W 29 ST	HIALEAH	33012
STRAWBERRY VILLAGE TRAILER PARK	1451 W 29 ST	HIALEAH	33012
HIALEAH TRAILER PARK	425 E 33 ST	HIALEAH	33013
COURTLY MANOR	12401 W OKEECHOBEE RD	HIALEAH GARDENS	33018
JONES FISHING CAMP TRAILER PARK	14601 NW 185 ST	UNINCORPORATED	33018
AQUARIUS MOBILE HOME PARK	451 E LUCY ST	HOMESTEAD	33030
BOARDWALK MOBILE HOME PARK	100 NE 6 AVE	HOMESTEAD	33030
COCOWALK ESTATES	220 NE 12 AVE	HOMESTEAD	33030
HOMESTEAD TRAILER PARK	E MOWRY DR & SE 2 RD	HOMESTEAD	33030
PRINCETONIAN MOBILE HOME PARK	12900 SW 253 TERR	UNINCORPORATED	33032
LEISURE EAST (PALM GARDENS RV PARK)	28300 SW 147 AVE	UNINCORPORATED	33033
PALM GARDENS MOBILE HOME PARK	28501 SW 152 AVE	UNINCORPORATED	33033
PINE ISLE MOBILE HOME PARK	28600 SW 132 AVE	UNINCORPORATED	33033
ANDREW CENTER	19308 SW 380 ST	UNINCORPORATED	33034
FLORIDA CITY CAMP SITE & RV PARK	601 NW 3 AVE	FLORIDA CITY	33034
GATEWAY ESTATES MOBILE HOME PARK	35250 SW 177 CT	UNINCORPORATED	33034
GOLDCOASTER TRAILER PARK	SW 348 ST & SW 187 AVE	UNINCORPORATED	33034
SOUTHERN COMFORT TRAILER PARK	345 E PALM DR	FLORIDA CITY	33034
HONEY HILL	4955 NW 199 ST	UNINCORPORATED	33055
ROYAL COUNTRY	5555 NW 202 TERR	OPALOCKA	33055
RIVIERA PARK	NW 199 ST & NW 37 AVE	MIAMI GARDENS	33056
FLAGAMI PARADISE TRAILER PARK	2750 NW SOUTH RIVER DR	MIAMI	33125
GABLES TRAILER PARK	SW 8 ST & SW 44 AVE	UNINCORPORATED	33134
SILVER COURT TRAILER PARK	SW 8 ST & SW 32 AVE	MIAMI	33135
LITTLE FARM MOBILE COURT	NE 85 ST & BISCAYNE BLVD	MIAMI	33138
ALL STAR 36 STREET	NW 35 ST & NW 30 AVE	UNINCORPORATED	33142
CARELY'S & BLUE BELL TRAILER PARK	NW 41 ST & NW 37 AVE	UNINCORPORATED	33142
FRONTON TRAILER PARK	3617 NW 36 ST	UNINCORPORATED	33142
RIVER PARK TRAILER	2260 NW 27 AVE	UNINCORPORATED	33142
ROYAL DUKE	3620 NW 30 AVE	UNINCORPORATED	33142
LION MIAMI TERRACE TRAILER PARK	1040 SW 70 AVE	UNINCORPORATED	33144



2019 HURRICANE SEASON – EMERGENCY EVACUATION PICK-UP SITES

HURRICANE EVACUATION – MOBILE HOME PARKS (Part 2 of 2)

MOBILE HOME - EVACUATION BUS PICK-UP SITE (SORTED BY ZIPCODE)	ADDRESS	CITY	ZIP
SUNNYSIDE TRAILER PARK	6024 SW 8 ST	WEST MIAMI	33144
WESTHAVEN TRAILER PARK	6020 SW 8 ST	WEST MIAMI	33144
J BAR J MOBILE HOME PARK	2980 NW 79 ST	UNINCORPORATED	33147
MIAMI HEIGHTS TRAILER PARK	3520 NW 79 ST	UNINCORPORATED	33147
PALM LAKE MOBILE HOME PARK	7600 NW 27 AVE	UNINCORPORATED	33147
TROPICAL VILLAGE	1398 NW 79 ST	UNINCORPORATED	33147
COLONIAL ACRES MOBILE HOME PARK	9674 NW 10 AVE	UNINCORPORATED	33150
LITTLE RIVER MOBILE HOME PARK	215 NW 79 ST	UNINCORPORATED	33150
NEW AVOCADO TRAILER PARK	1170 NW 79 ST	UNINCORPORATED	33150
ROVELL TRAILER PARK	939 NW 81 ST	UNINCORPORATED	33150
SUNNYLAND TRAILER PARK	NW 79 ST & NW MIAMI CT	UNINCORPORATED	33150
TRINIDAD COURT	7930 NW MIAMI CT	UNINCORPORATED	33150
WESTLAND MOBILE HOME PK	1175 NW 79 ST	UNINCORPORATED	33150
SIXTH AVE TRAILER PARK	14752 NE 6 AVE	UNINCORPORATED	33161
SHADY OAK	14701 NE 6TH AVE	UNINCORPORATED	33161
MEDLEY MOBILE HOME PARK	8181 NW SOUTH RIVER DR	MEDLEY	33166
REDLAND MOBILE HOME PARK	17360 SW 232 ST	UNINCORPORATED	33170
SILVER PALM MOBILE HOME PARK	17350 SW 232 ST	UNINCORPORATED	33170
LIL' ABNER MOBILE HOME PARK	11239 NW 4 TERR	UNINCORPORATED	33172
LARRY/PENNY THOMPSON	12451 SW 184 ST	UNINCORPORATED	33177
MEDLEY LAKESIDE RETIREMENT PARK	10601 NW 105 WAY	MEDLEY	33178
DIXIE MOBILE COURT	19640 W DIXIE HWY	UNINCORPORATED	33180
HIGHLAND VILLAGE MOBILE HOME PARK	13565 NE 21 AVE	NORTH MIAMI BEACH	33181
BISCAYNE BREEZE PARK	11380 BISCAYNE BLVD	UNINCORPORATED	33181
UNIVERSITY LAKES TRAILER PARK	12850 SW 14 ST	UNINCORPORATED	33184
AMERICANA VILLAGE CONDO	19800 SW 180 AVE	UNINCORPORATED	33187
MIAMI-EVERGLADES KAMPGROUND	20675 SW 162 AVE	UNINCORPORATED	33187
GATOR PARK MOBILE HOME PARK	24050 SW 8 ST	UNINCORPORATED	33194